



TRAVELPORT
Official Partner

Travelport+ (Galileo) Installation Step by Step (Estimated time 10 – 20 Mins)

- **Pre-requisite to install Travelport+ Software**

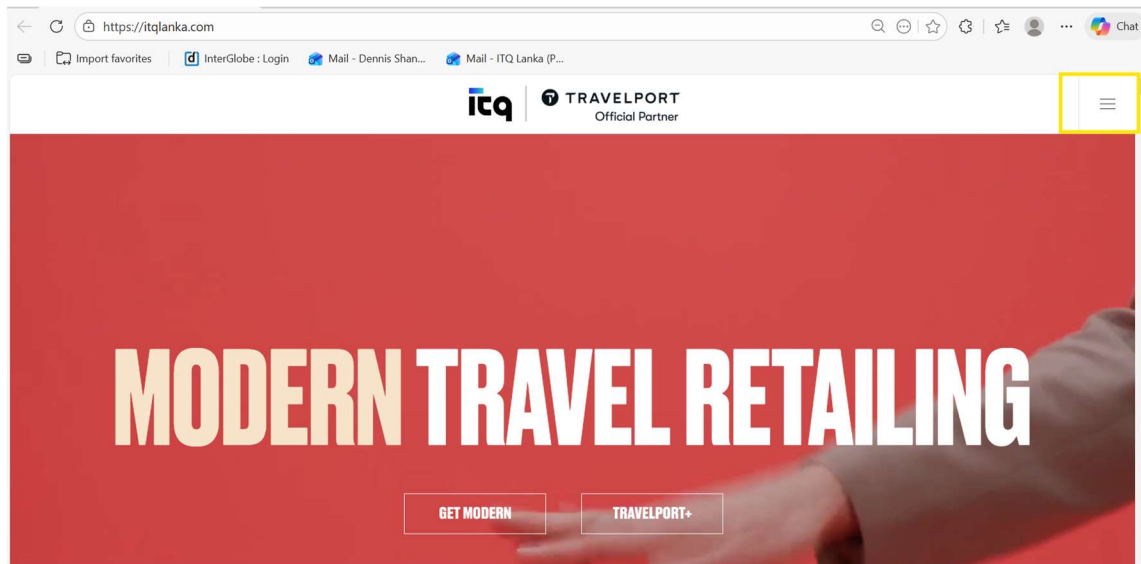
Processor: i3 / i5 / i7 (1.7ghz or higher)

Ram: 8 GB or higher

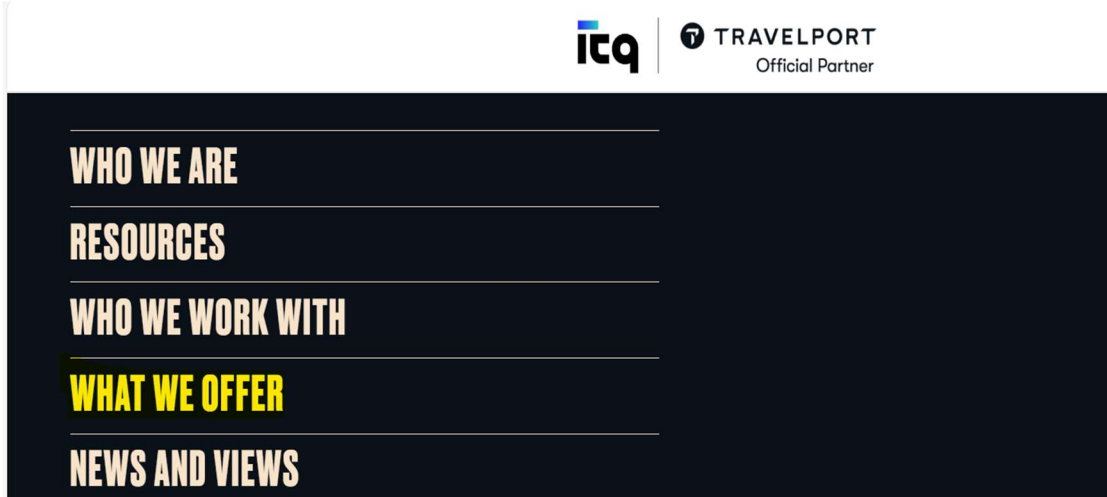
Storage: 256GB SSD or Higher

Recommended Operating Systems: Windows 10 22H2 (2022 Update) or Windows 11

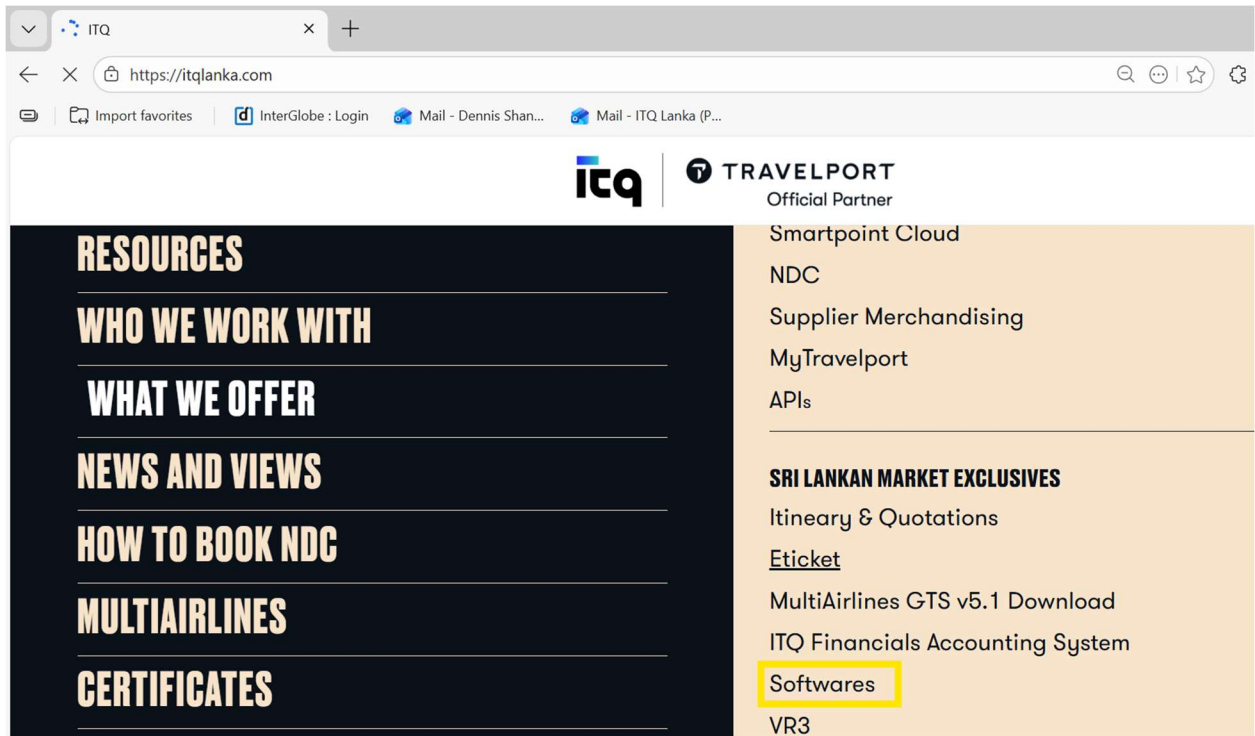
1. Go to www.itqlanka.com & click on the Indicated icon 



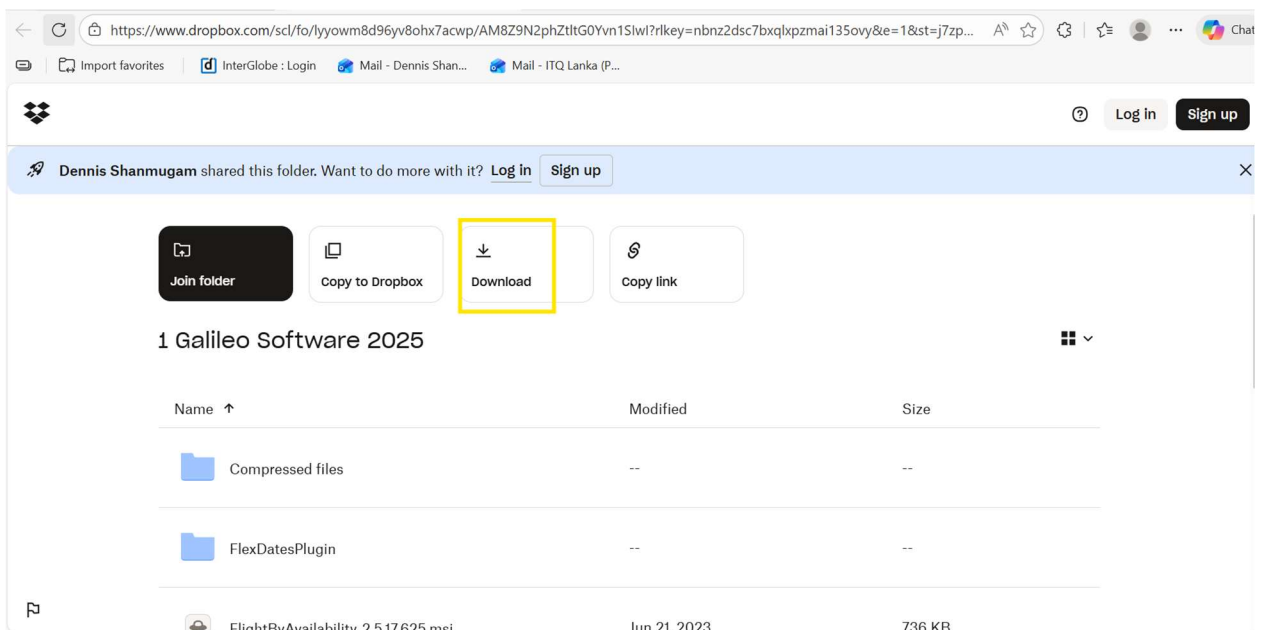
2. Click on “WHAT WE OFFER”



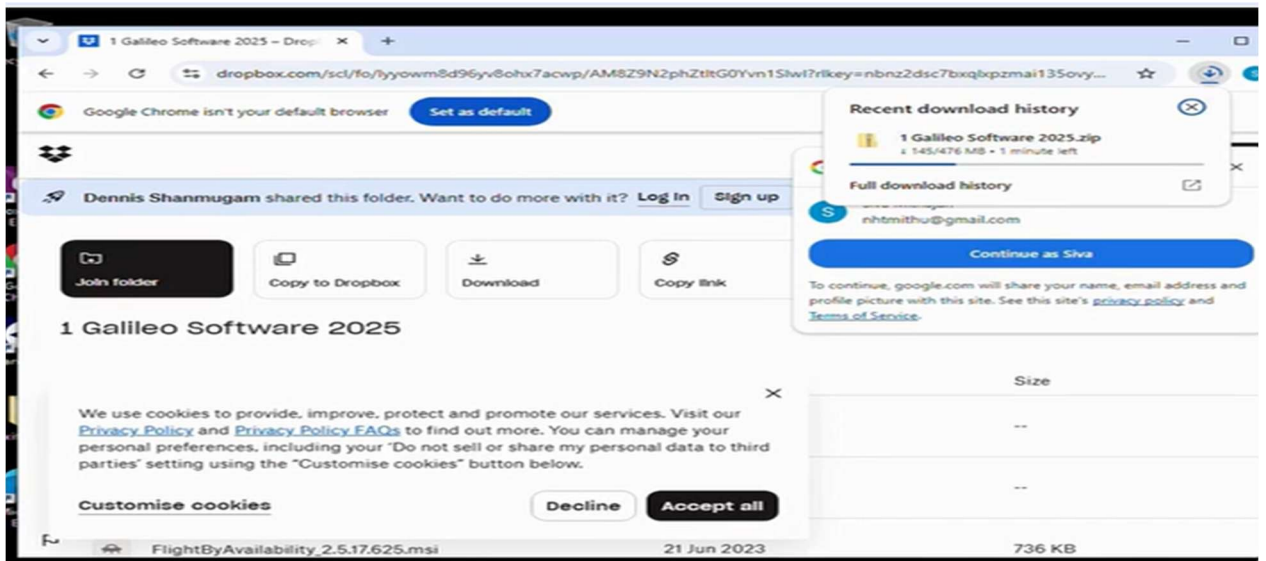
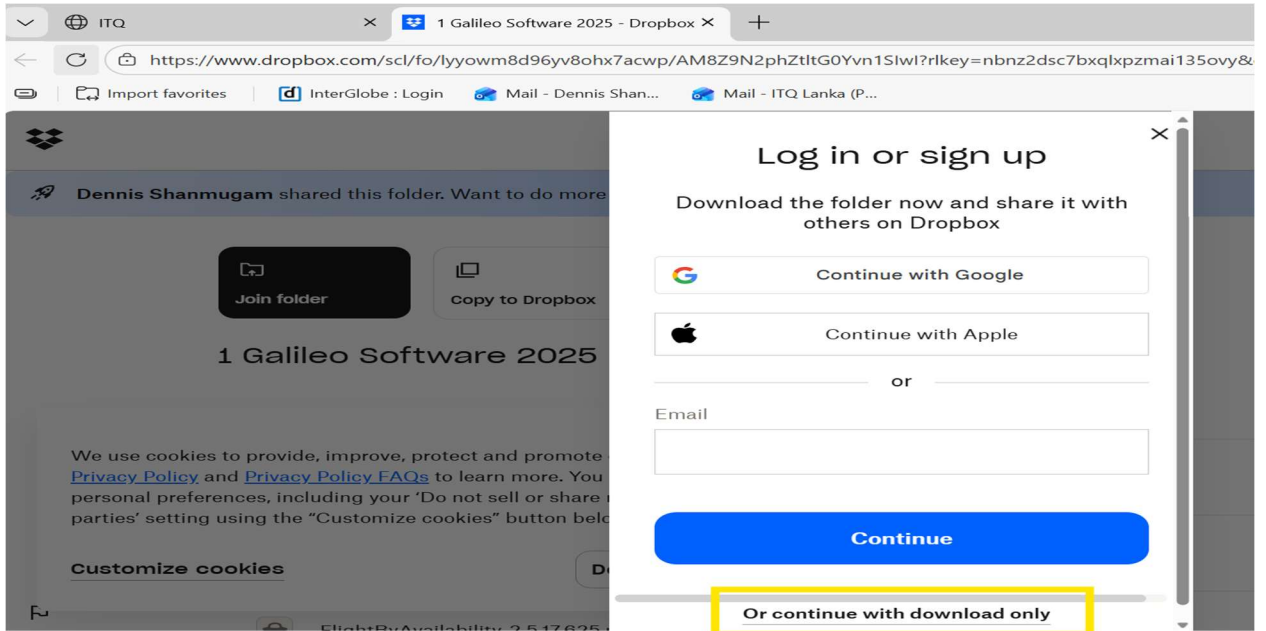
3. Next click on Softwares



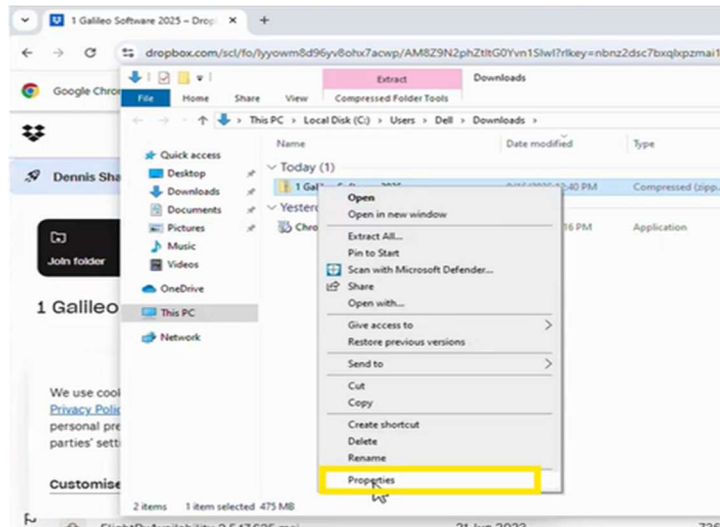
4. The Dropbox link will open click on the download icon



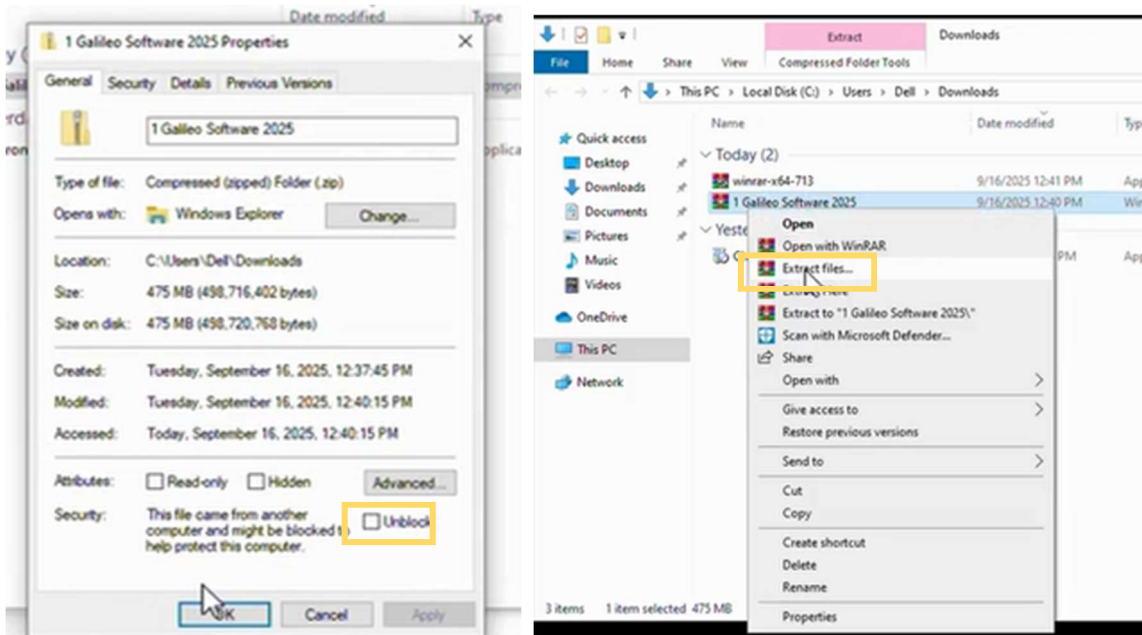
5. Click on continue with download only



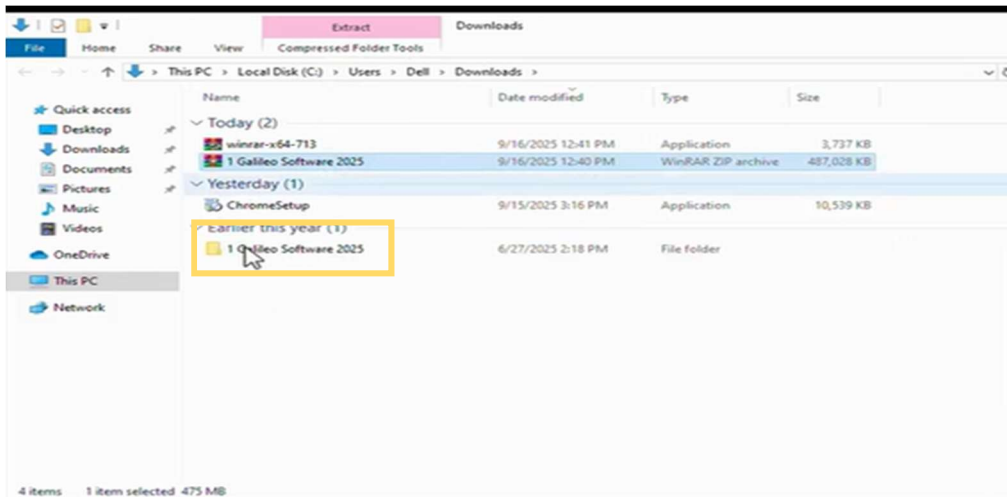
6. After the download is completed --- go to the folder location----right click on the 1 Galileo folder and go to properties



7. Click and Unblock ---- Apply & Ok----- next right click and extract the files (to extract folder please download WinRAR software)



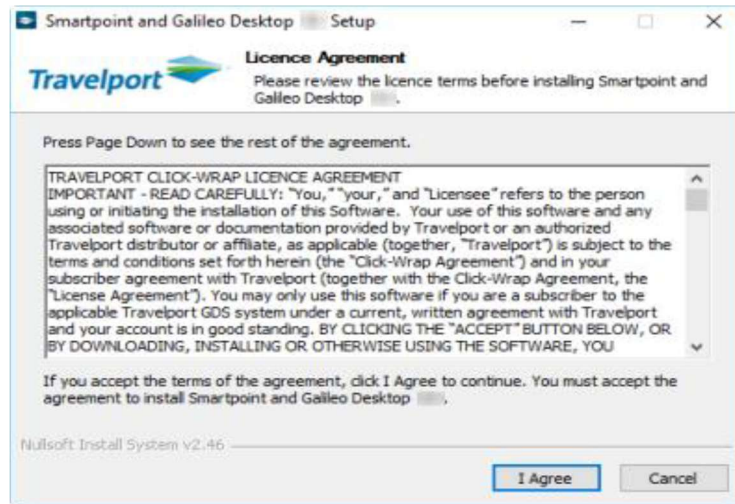
8. When the folder is extracted open the 1 Galileo Software folder



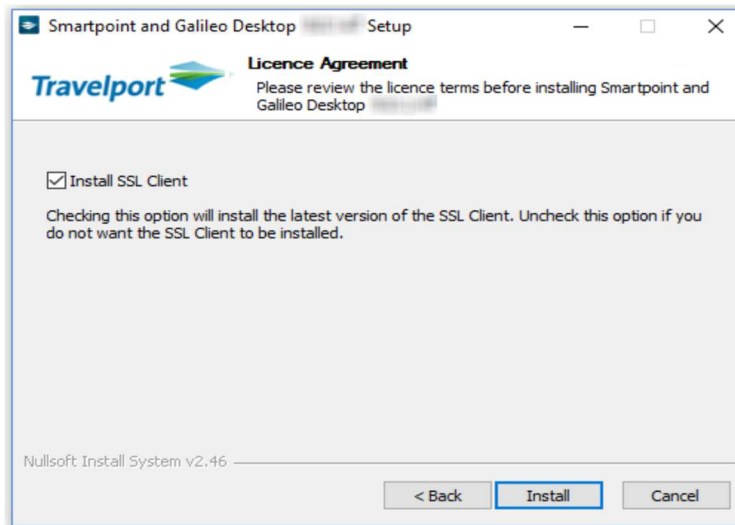
9. Next click on the SmartPoint and Galileo Desktop SmartPoint exe file

- Travelport Smartpoint 11.7.1.24.exe
- Smartpoint and Galileo Desktop Smartpoint_ReleaseMSI_
- FlightByAvailability_2.5.17.625.msi
- GalileoSSLClient_v3.0.3.1.exe
- SP Toolbar Installer.msi
- SPPluginBundleInstaller (2).zip
- FlexDatesPlugin
- Compressed files
- SPPluginBundleInstaller

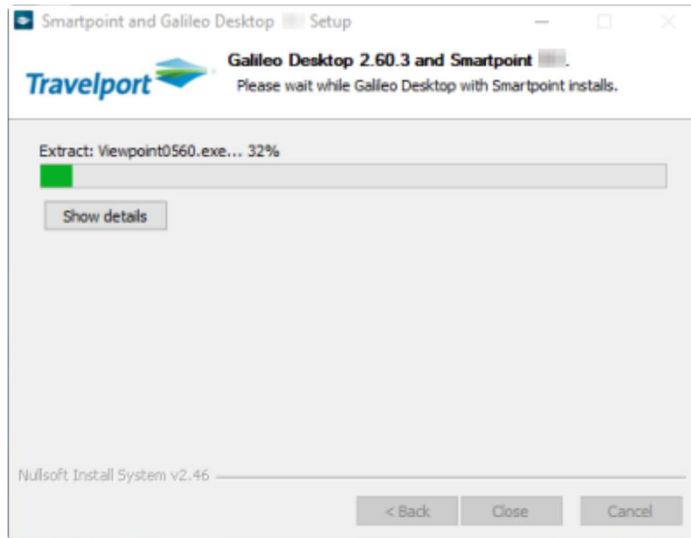
Click I Agree.



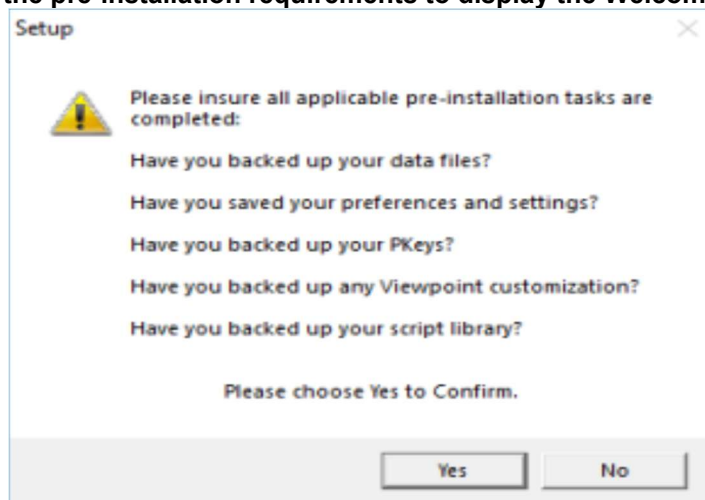
Install SSL Client



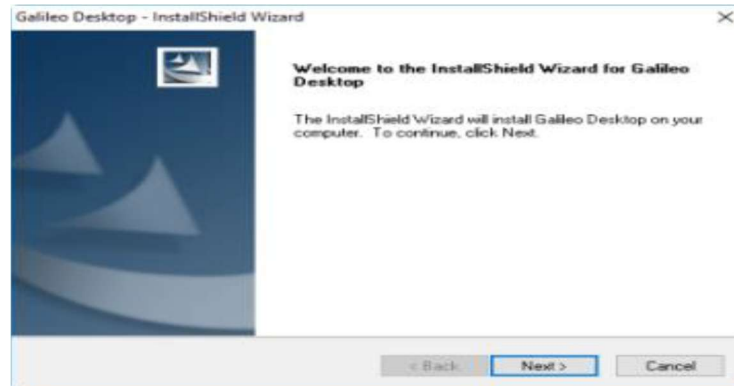
Click Install.



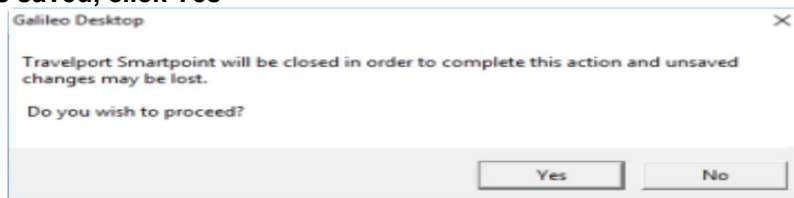
Click Yes to confirm the pre-installation requirements to display the Welcome window.



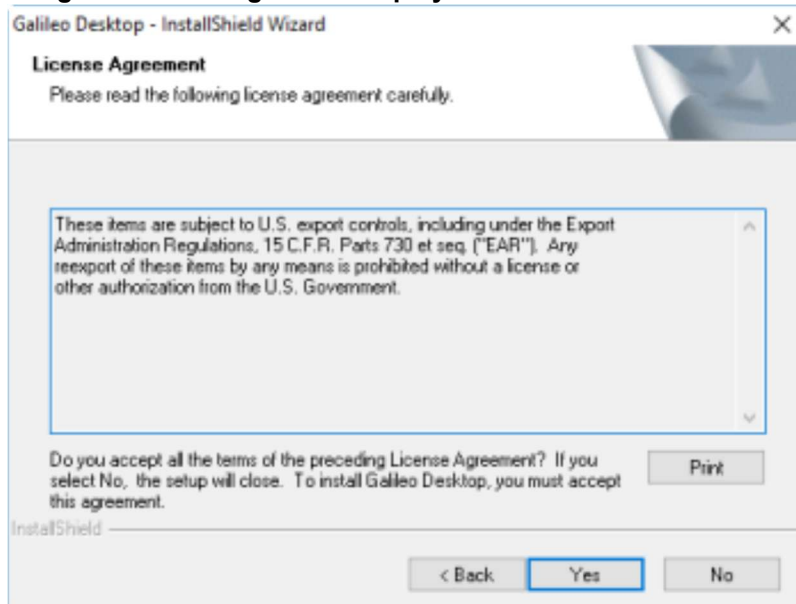
Click Next.



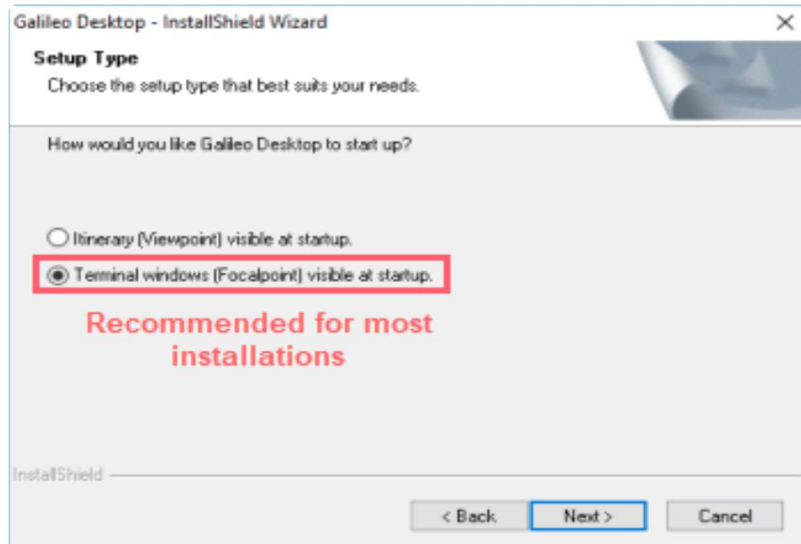
If Travelport SmartPoint or Galileo Desktop is open, a warning message is displayed
If all of your work is saved, click Yes



The License User Agreement dialog box is displayed.

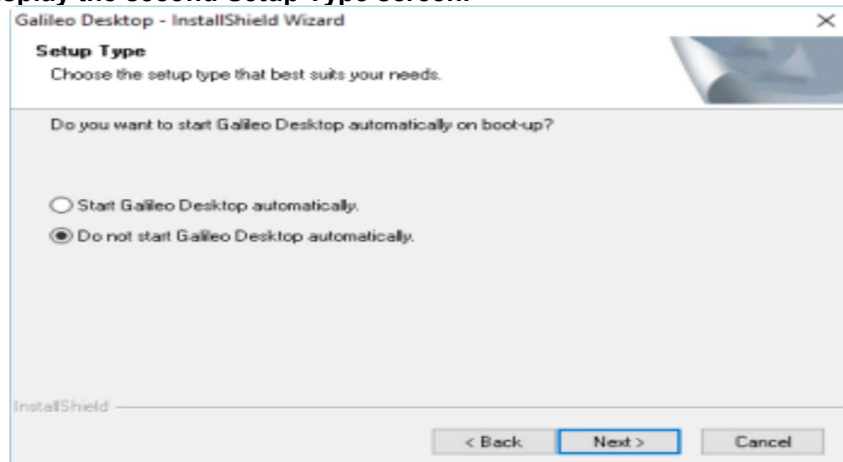


Select Yes to accept the terms in the License Agreement. The first Setup Type screen is displayed

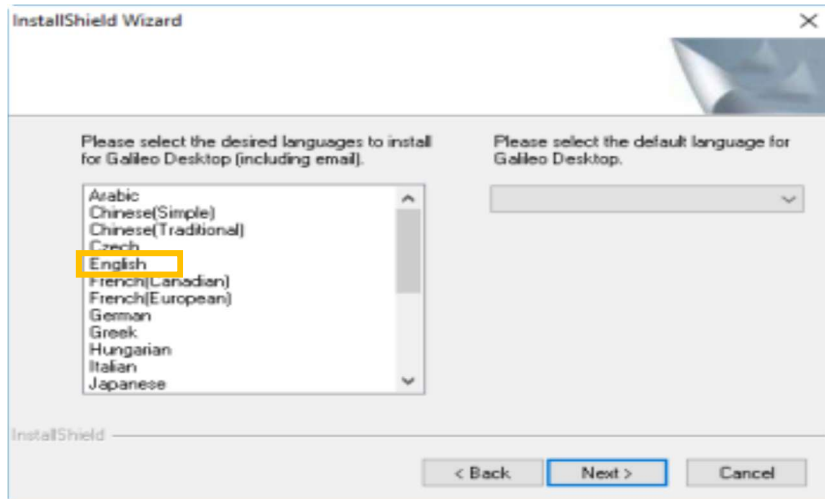


Select Terminal windows (Focalpoint) visible at startup

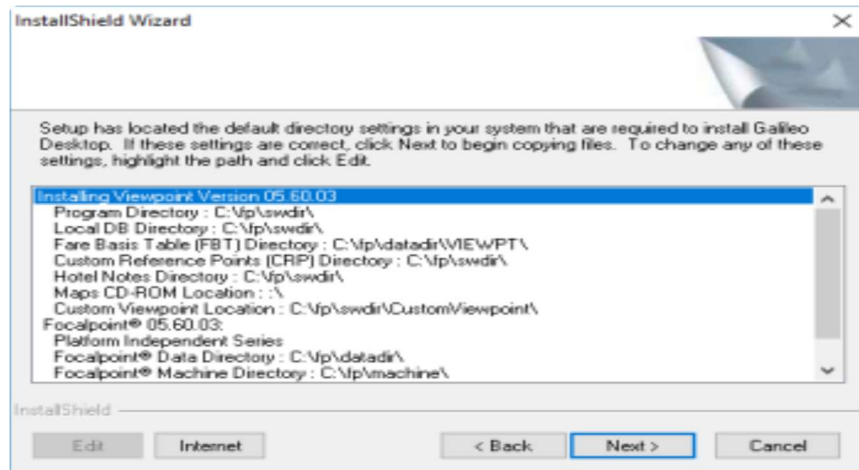
Click Next to display the second Setup Type screen.



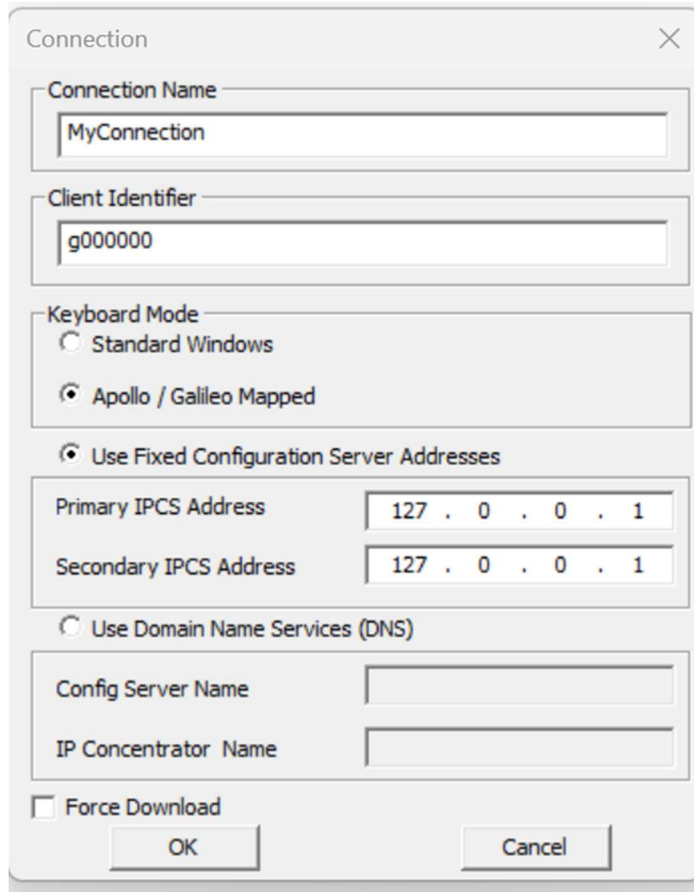
Click Next to display the language options.



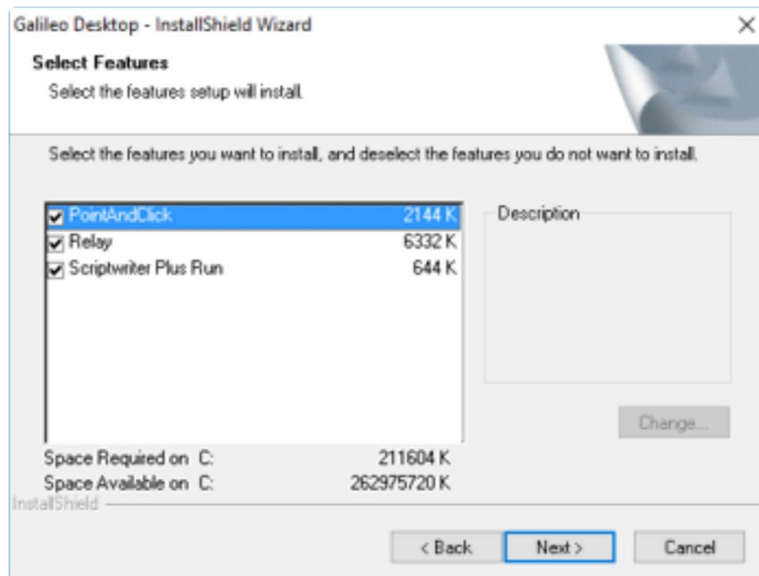
Select English and Click Next to display the directory settings



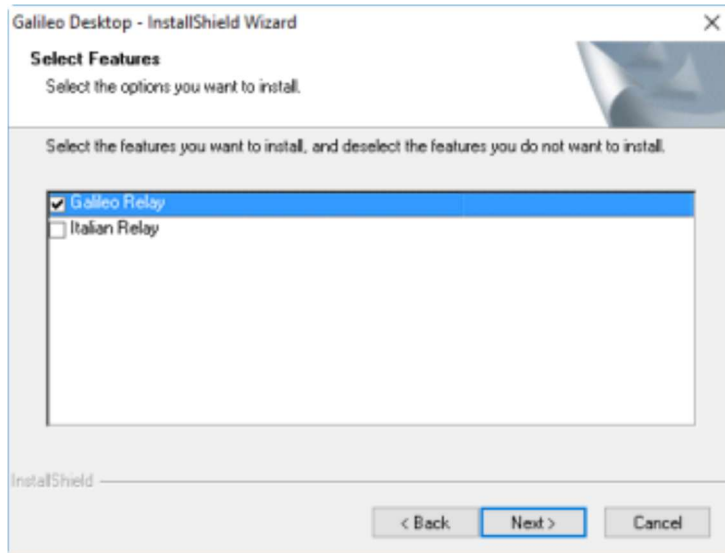
click Next. The Host/Galileo Desktop TCP/IP Configuration screen is displayed.



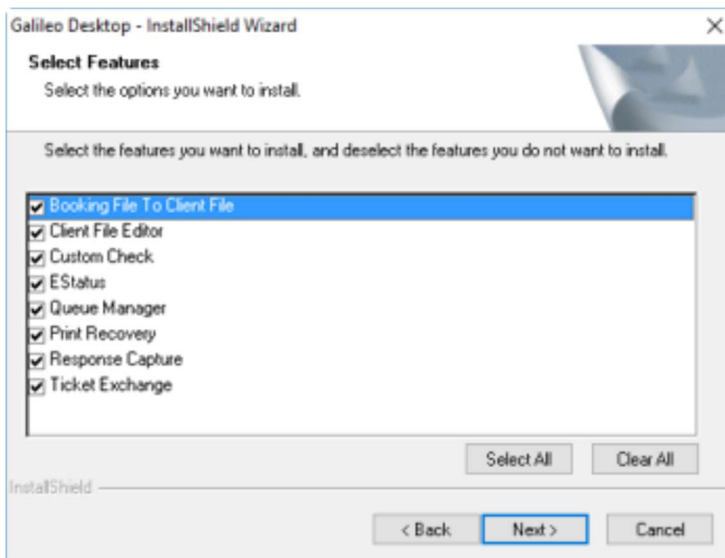
**Client identifier type g000000 (Please provide the sign on details to Galileo helpdesk team for this to issue the Client id)
For Primary & Secondary IPCS address type 127.0.0.1 and click ok**



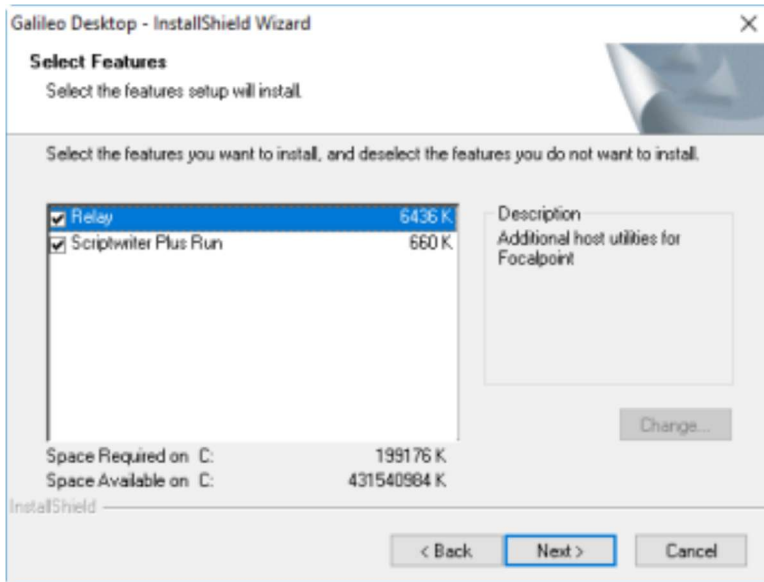
It is recommended to install all of the default Feature options Then, click Next



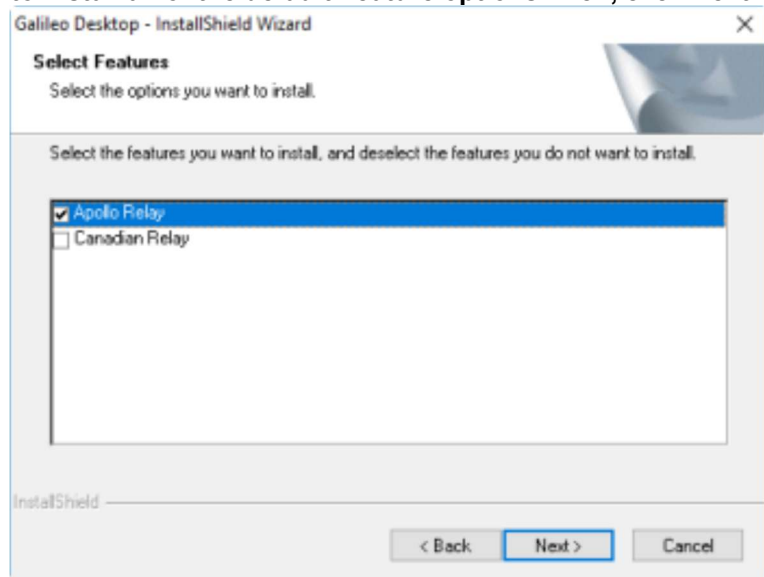
select Galileo Relay. Then, click Next



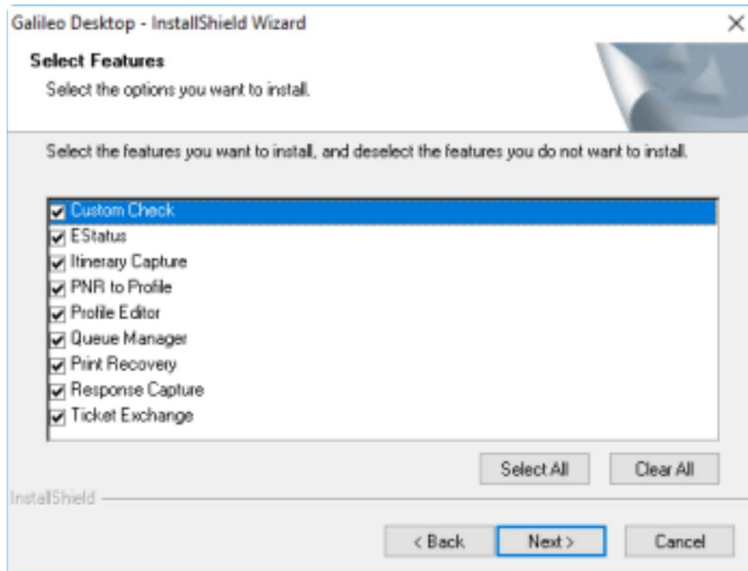
Keep all of the default features. Click Next



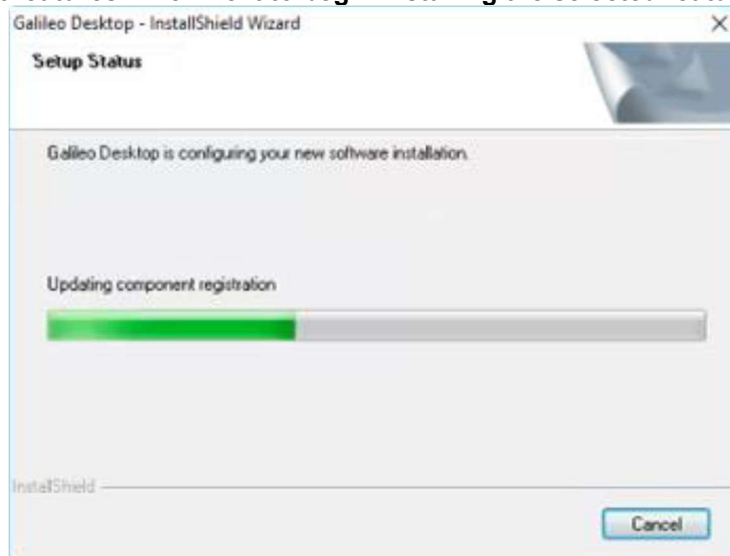
It is recommended to install all of the default Feature options Then, click Next.

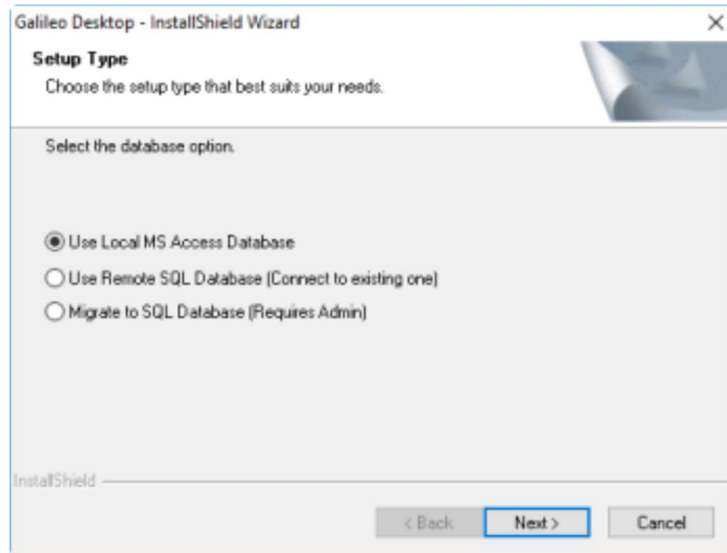


select Apollo Relay. Then, click Next.

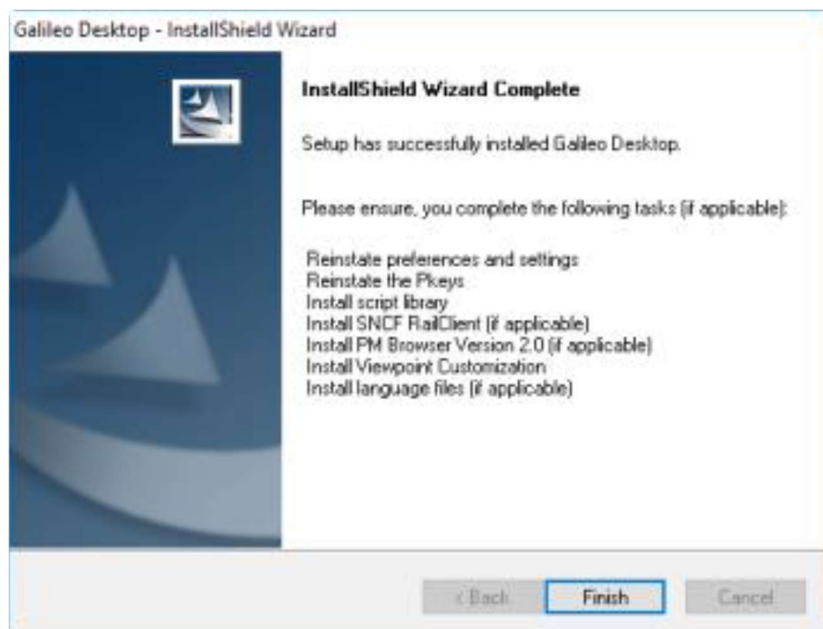


Keep all of the default features. Click Next to begin installing the selected features.

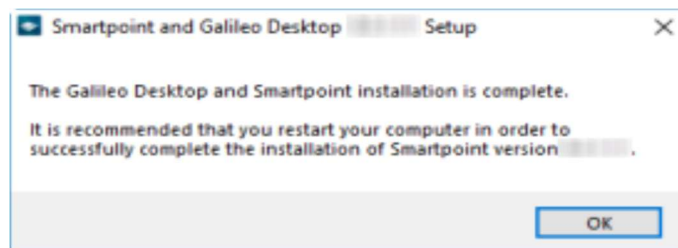




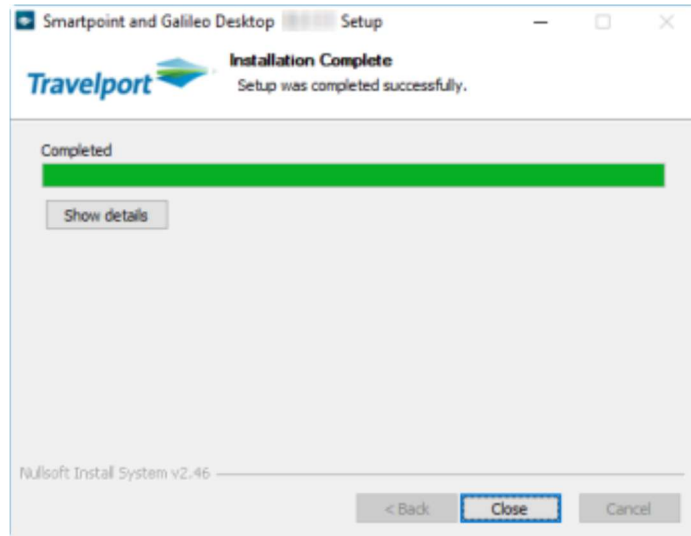
Keep the default Use Local MS Access Database & Click Next.



Click Finish to display the installation progress screen. After the installation is complete,



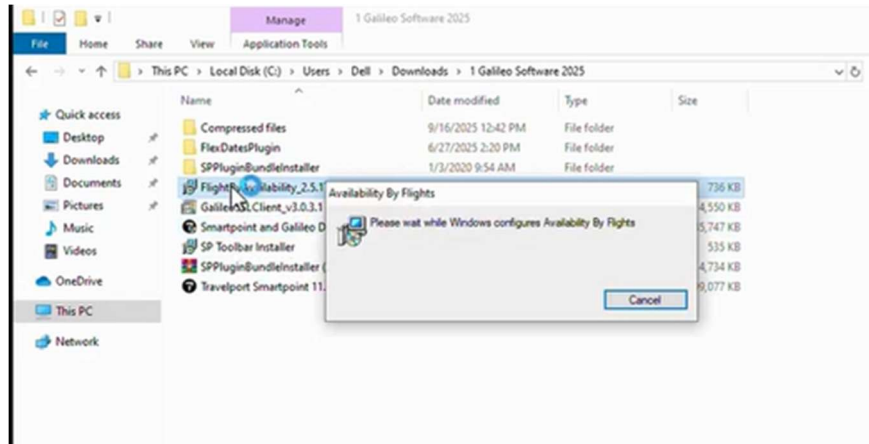
Click OK to display the Installation Complete screen.



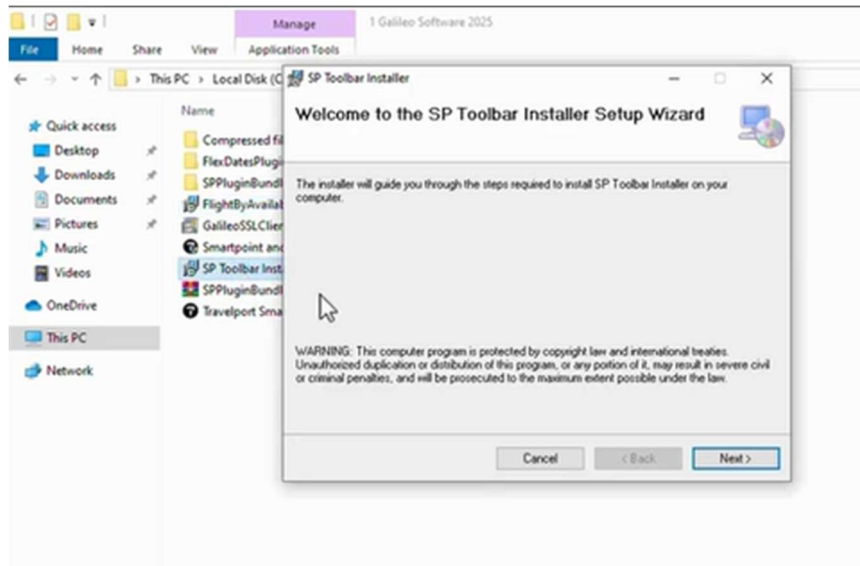
Click Close.

Go to Galileo folder location again and install flight by availability

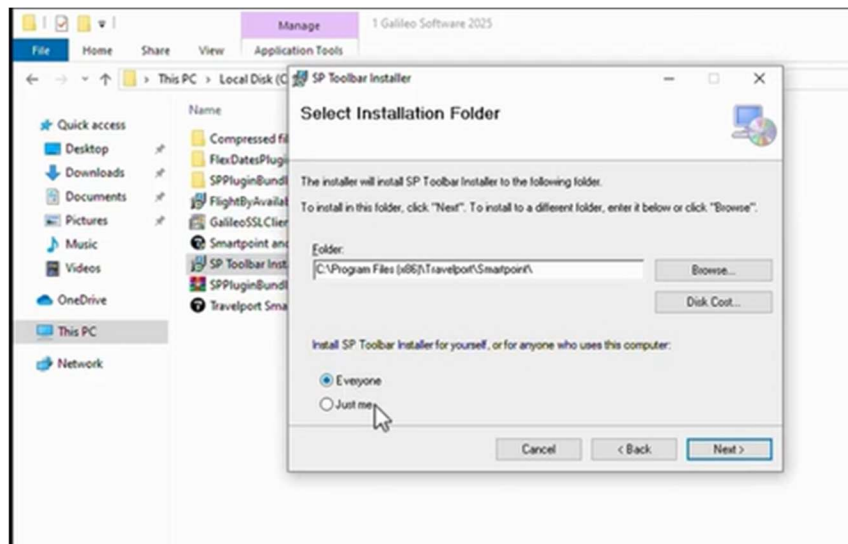
- Travelport Smartpoint 11.7.1.24.exe
- Smartpoint and Galileo Desktop Smartpoint_ReleaseMSI_Of...
- FlightByAvailability_2.5.17.625.msi**
- GalileoSSLClient_v3.0.3.1.exe
- SP Toolbar Installer.msi
- SPPluginBundleInstaller (2).zip
- FlexDatesPlugin
- Compressed files
- SPPluginBundleInstaller



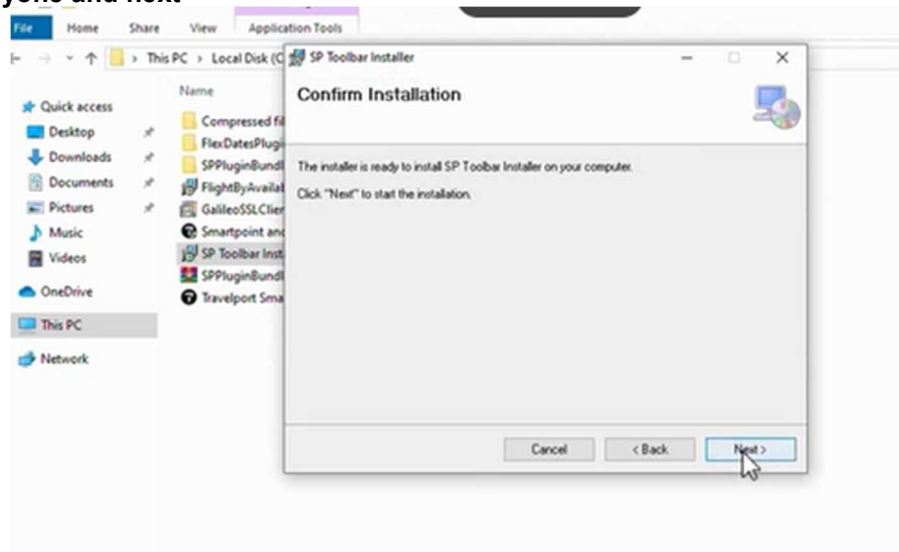
Next install the SP Toolbar Installer



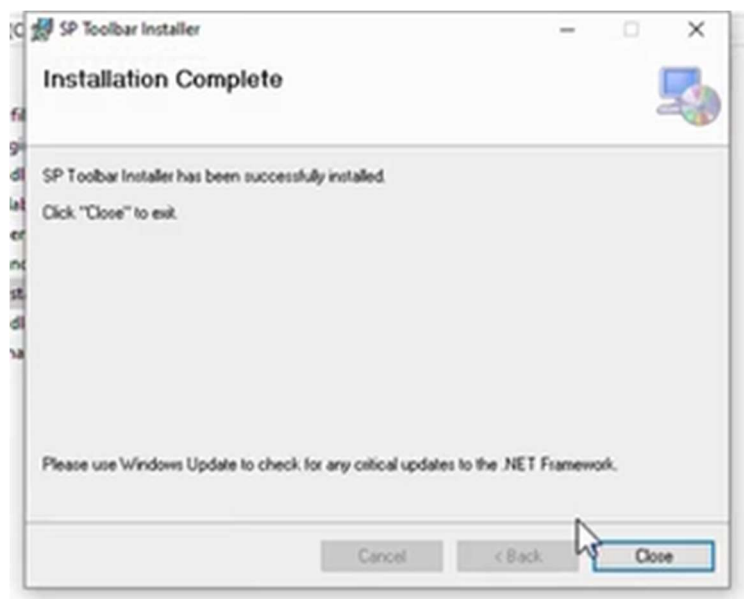
Click next



Click on everyone and next

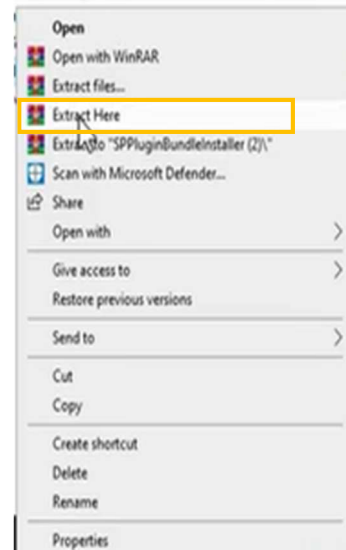
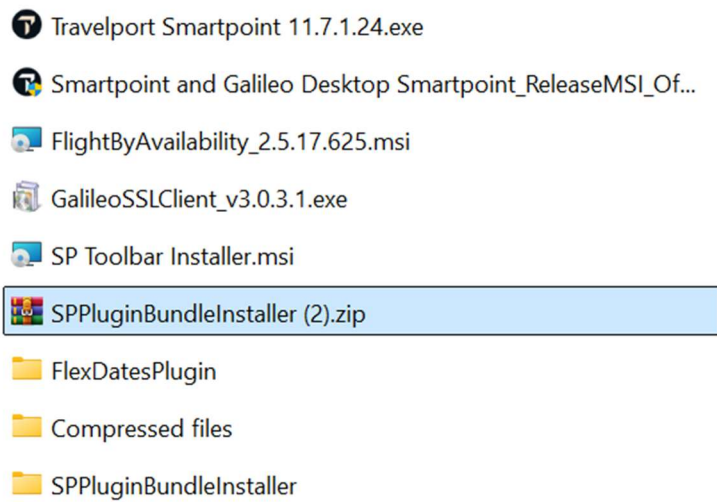


Confirm installation and next

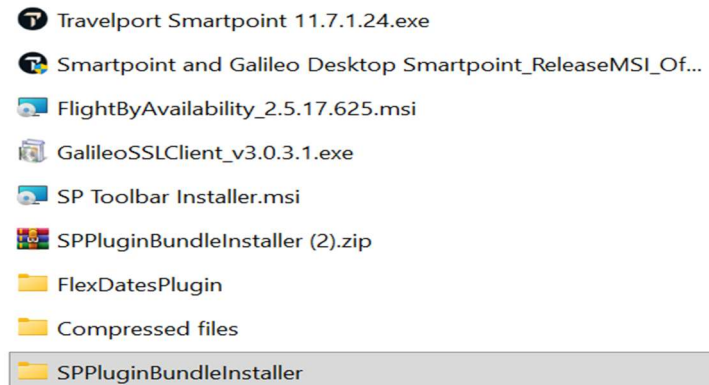


After installation complete click close

Now Right click on the SPPluginBundleInstaller (2) zip folder and click extract here

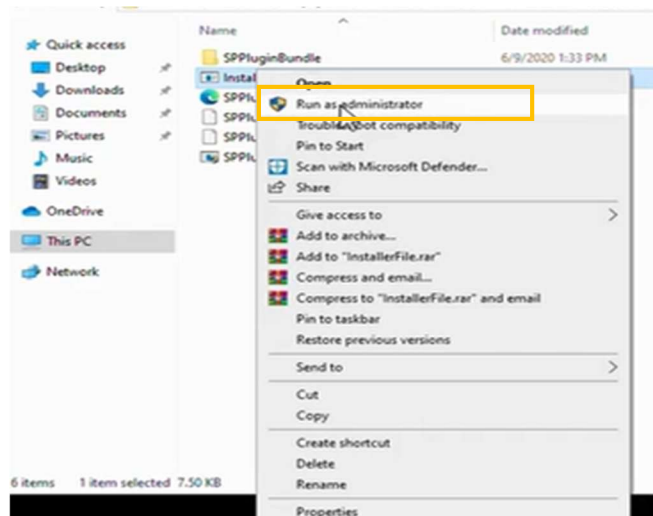


When the extracted is done open the SPPluginBundleInstaller



Name	
A long time ago	
InstallerFile.exe	1
SPPluginBundleInstaller.pdb	1
SPPluginBundleInstaller.vshost.exe	1
SPPluginBundle.xml	1
SPPluginBundleInstaller.exe.config	7
SPPluginBundle	6

Right click on the InstallerFile.exe and select run as administrator



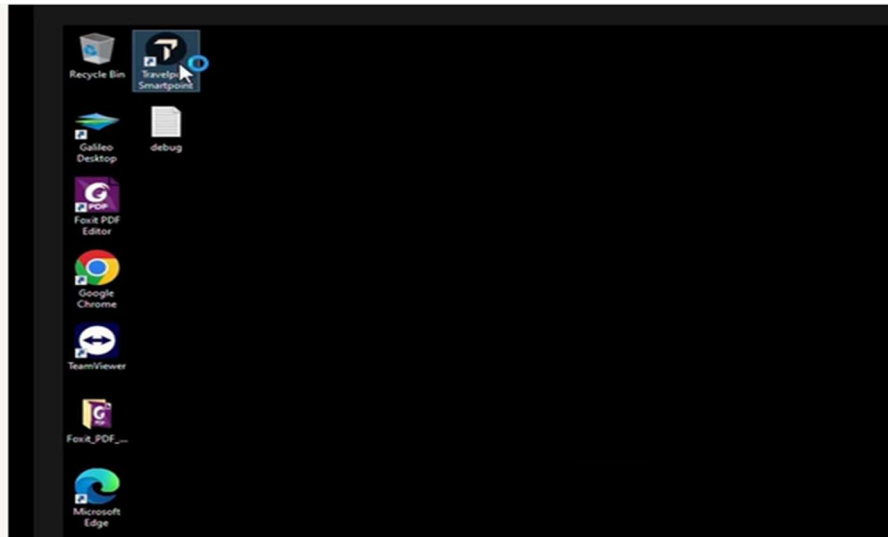
```

C:\Users\ DELL\Downloads\1 Galleo Software 2025\SPPluginBundle\Installer\InstallerFile.exe
SPPluginBundle.xml exist True
PluginBundle exist True
this OS is 64 Bit
Directory Path is C:\Program Files (x86)\Travelport\Smartpoint\
Directory path created C:\Program Files (x86)\Travelport\Smartpoint\plugins\SPPluginBundle\
SPPluginBundle.xml file copied to C:\Program Files (x86)\Travelport\Smartpoint\PluginLocations\
All done, press any key to exit.

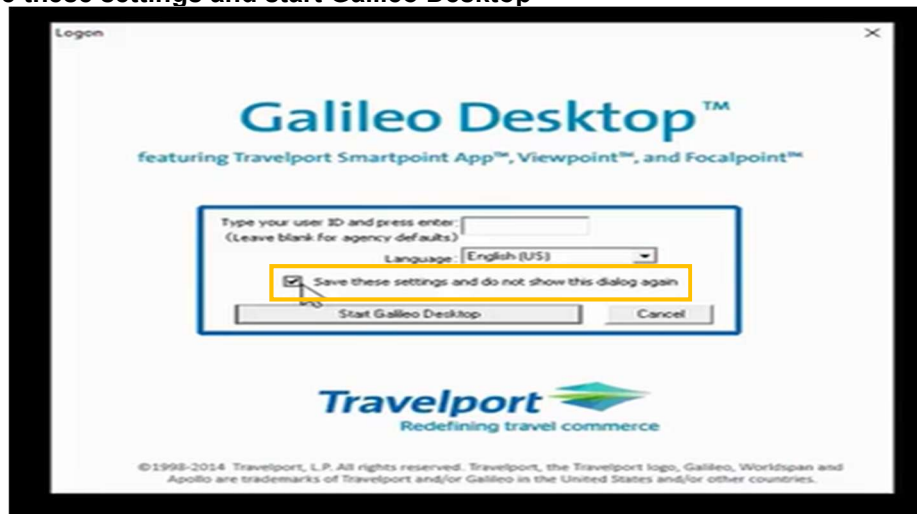
```

Press any key to exit & Close all folders

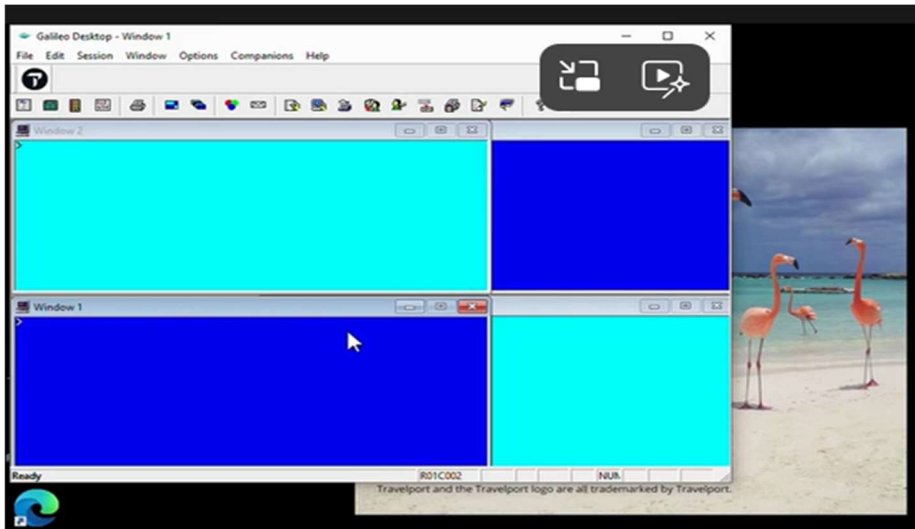
Congratulations you have successfully installed the 1G software now click on the Travelport SmartPoint icon



Click on save these settings and start Galileo Desktop



Please wait until the configuration is done



Now you can enter your sign on details and login to the system

